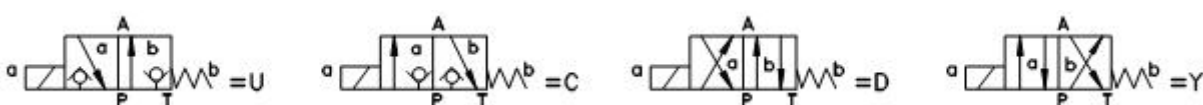


[China Solenoid operated directional poppet valve, Manufacturer, Supplier, Factory, Exporter in china](#)



**Symbols:**

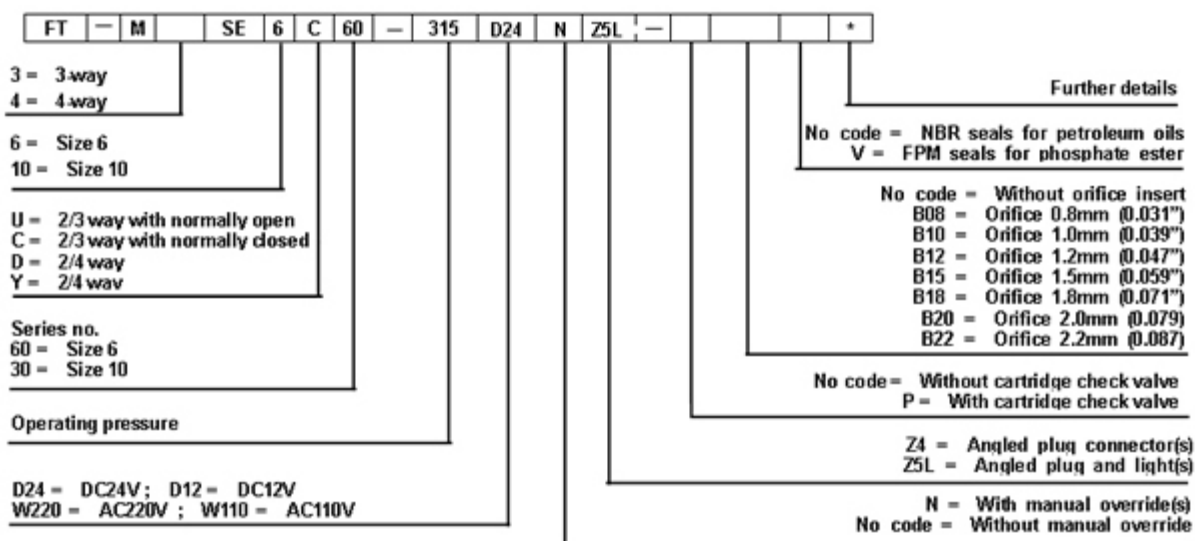


**Solenoid operated poppet valves**

Model FT-M-SE series are directional poppet valves with solenoid operation, they control the direction, start, stop of flow, with characteristic of great performance, easy coil connection and replacement and standard mounting.

**Characteristic:**

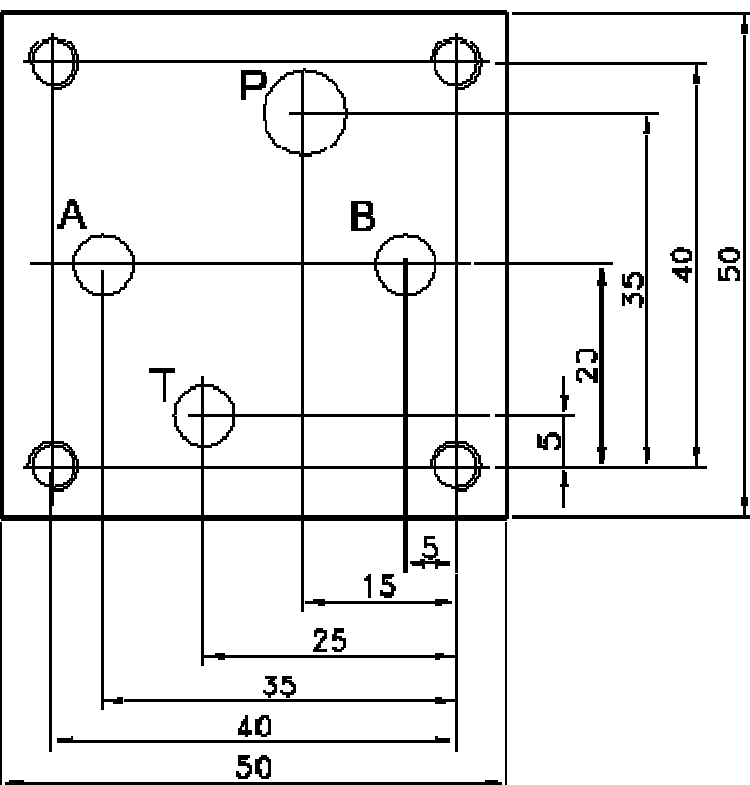
- 1. Standard subplate mounting allows 100% interchangeable with other brand directional valves.
- 2. Leak-free closure in checked position .
- 3. Plug-in coil for easy replacement with different voltage, 90o angle be rotated, and coil with manual override
- 4. Electrical connection is single.



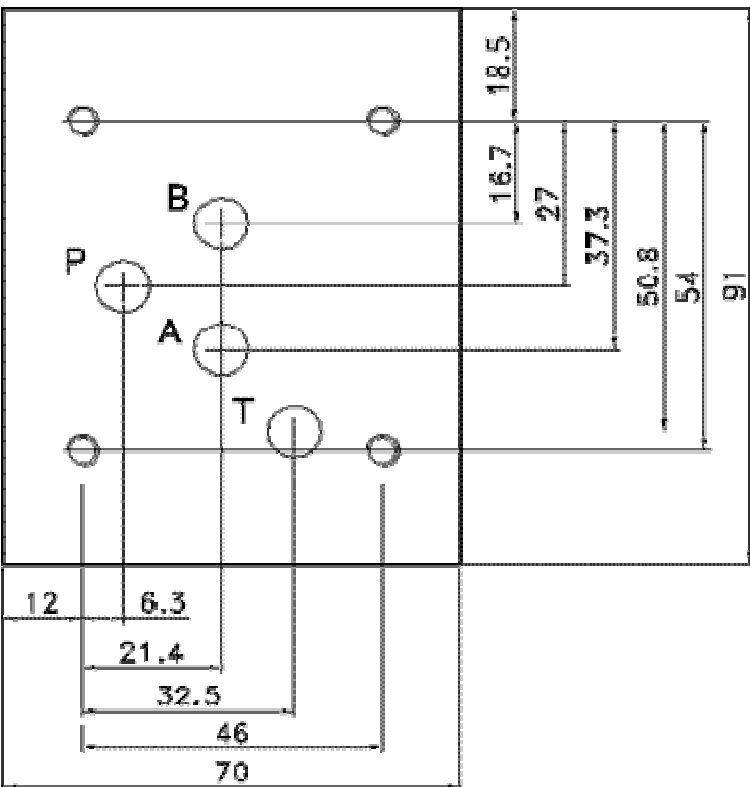
**Technical data**

General information								
Size	6U	6C	6D	6Y	10U	10C	10D	10Y
Flow Rate (L/min)	16	16	12	12	30	24	30	24
Operating pressure (bar)	315							
Available Voltage: DC	12, 24							
Available Voltage: AC	110, 220 (50/60Hz) *The earth line must be connected							
Fluid Contamination	Recommend: A filter with a minimum filtrating rate of $\beta_{10} \geq 75$							

**Model FT -- M;SE6 Dimensions for mounting**



**Model FT -- M;SE10 Dimensions for mounting:**



[Solenoid Operated Poppet Valves](#)

[Directional spool valves](#), [Direct operated spool valve](#), [Hand level spool valve](#), [Solenoid controlled directional valve](#), [Hydraulic operation valve](#), [Solenoid operated directional spool valve](#), [Electrical operated directional valve](#), [Hydraulic Solenoid valve](#), [Solenoid controlled directional valve](#), [Electro-hydraulic operation valves](#), [Externally pilot operated valve](#), [Hydraulic directional control valve](#), [Hydraulic operation directional control valve](#), [Manually directional valves](#), [Mechanical operational valve](#), [Manually operational valve](#), [Directional valves pilot operated](#), [Solenoid operated directional poppet valve](#), [Poppet valve with solenoid operation](#), [Directional poppet valves](#), [Pressure control valves](#), [Pressure relief valves](#), [Pressure direct operated relief valve](#), [Pilot operated pressure relief valve](#), [Pressure relief cartridge valve](#), [Pressure reducing valves](#), [Pilot operated pressure reducing valve](#), [Pressure unloading valves](#), [Pressure relief cartridge valve](#), [Pilot operated pressure unloading valve](#), [Pressure sequence valves](#), [Pilot operated pressure sequence valve](#), [Direct operated pressure reducing valve](#), [Sandwich plate pressure relief valve](#), [Flow control valves](#), [Throttle and throttle check valves](#), [Throttle valves](#), [Throttle check valves](#), [Sandwich plate check valve](#), [One directional control valves](#), [Double throttle check valves](#), [Restrict flow valves](#), [Sandwich flow valves](#), [Pressure compensated valves](#), [Pressure compensated flow control valves](#), [Check valves](#), [Sandwich plate check valve](#), [Pilot operated check valve](#), [Check \(Non-return\) valves](#), [Hydraulic pilot operated check valve](#), [RVP series direct operated check valves](#), [Direct operated check valves](#), [Cartridge Valves](#), [Reverse check cartridge valves](#), [Hydraulic operated check cartridge valves](#), [Check cartridge valves](#), [Pilot](#)

[operated check relief cartridge valves](#), [YF Direct operated relief cartridge valves](#), [Hydraulic accessories](#), [Six-circuit gauge isolator](#), [Pressure gauge isolator](#), [Hydraulic Pressure switch](#) , [Pressure switch](#), [Piston type pressure switch](#) , [Valve subplates](#), [Manifold bar](#),

---

Ningbo Hanshang Hydraulic Co.,Ltd.

Add: 118 Qiancheng Road, Zhenhai, Ningbo, Zhejiang Province

Contact: Sean Zhou

Tel: +86-574-86361025

Fax: +86-574-86361266

E-mail: [sales@china-hydraulicvalves.com](mailto:sales@china-hydraulicvalves.com)

WebSite: <http://www.hydraulicvalvesf.com>

---