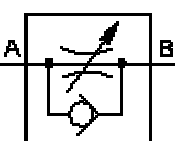




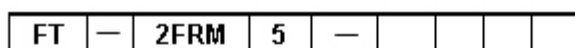
Symbols:



Model FT-2FRM series works as restrictive flow regulators, they can control the rate of flow accurately, no changes to fluid viscosity or pressure drop across the valves, It maintains the speed of actuator, with independent of changes in load reduced pressure.

Characteristic:

- 1. Smoothing the initial motion of the actuator.
- 2. Frequent adjustment reference with scale.
- 3. Standard mounting dimensions, interchangeable.



5 = Size 5, 10 = Size10, 16 = Size16

Flow adjustment range (A→B)
Please check the table blow

Further details

No code = NBR seals for petroleum oils
V = FPM seals for phosphate ester

No code = Without stroke adjustor
B = With stroke adjustor



Table: Flow Adjustment Range (A->B)

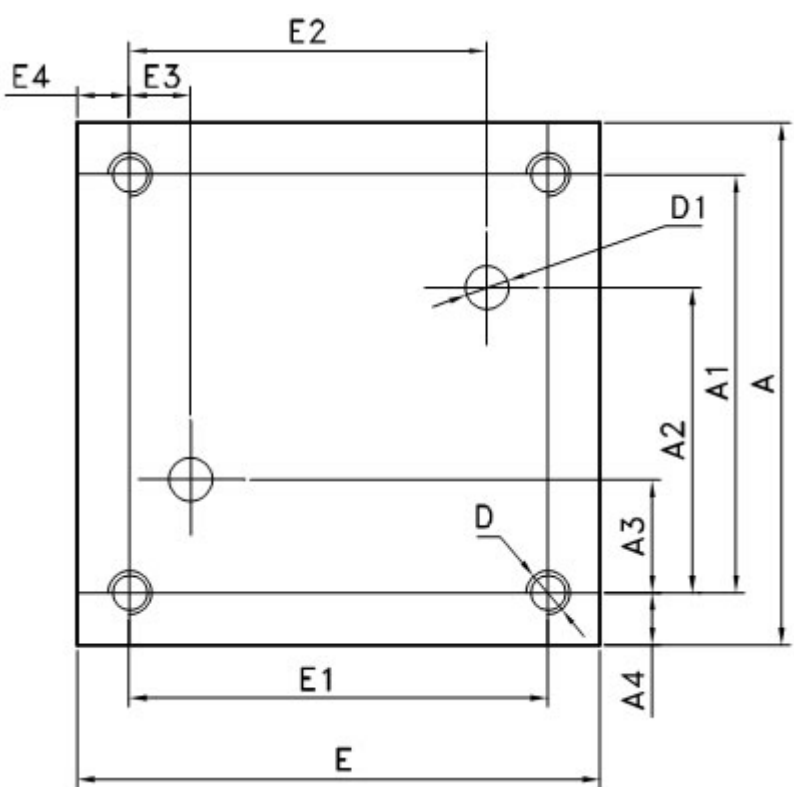
Size 5	Size 10	Size 16
0.2L/min=0.2L	10L/min=10L	60L/min=60L
0.6L/min=0.6L	16L/min=16L	100L/min=100L
1.2L/min=1.2L	25L/min=25L	160L/min=160L
3L/min=3L	50L/min=50L	
6L/min=6L		

10L/min=10L		
15L/min=15L		

Technical data

Size	5							10				16		
Max. flow (L/min)	0.2	0.6	1.2	3	6	10	15	10	16	25	50	60	100	160
Reverse free flow (B->A) through check valve ΔP (bar)	0.05	0.05	0.06	0.09	0.18	0.36	0.67	0.2	0.25	0.35	0.6	0.28	0.43	0.73
Min. pressure loss (bar)	3~5 (6~8)							3~7				5~1.2		
Rectifier technical data														
Operating pressure (bar)	210							315				315		
Cracking pressure (bar)	1							1.5				1.5		

Model FT -- 2FRM dimensions for mounting



Type	A	A1	A2	A3	A4	D	D1	E	E1	E2	E3	E4
2FRM5	60	48	35	13	6	4-M5	2-Ø5	60	48	41	7	6
2FRM10	101.5	82.5	71.6	30.1	9.5	4-M8	2-Ø10	95	76	55.1	9.6	8.5

2FRM16	123.5	101.5	90.5	15	11	4-M10	2-Ø16	123.5	101.5	75	20.5	11
--------	-------	-------	------	----	----	-------	-------	-------	-------	----	------	----



[Restrict flow valve](#)

[Directional spool valves](#), [Direct operated spool valve](#), [Hand level spool valve](#) , [Solenoid controlled directional valve](#) , [Hydraulic operation valve](#) , [Solenoid operated directional spool valve](#), [Electrical operated directional valve](#) , [Hydraulic Solenoid valve](#) , [Solenoid controlled directional valve](#) , [Electro-hydraulic operation valves](#), [Externally pilot operated valve](#) , [Hydraulic directional control valve](#), [Hydraulic operation directional control valve](#) , [Manually directional valves](#), [Mechanical operational valve](#) , [Manually operational valve](#), [Directional valves pilot operated](#) , [Solenoid operated directional poppet valve](#), [Poppet valve with solenoid operation](#) , [Directional poppet valves](#) , [Pressure control valves](#), [Pressure relief valves](#), [Pressure direct operated relief valve](#) , [Pilot operated pressure relief valve](#), [Pressure relief cartridge valve](#) , [Pressure reducing valves](#) , [Pilot operated pressure reducing valve](#), [Pressure unloading valves](#) , [Pressure relief cartridge valve](#), [Pilot operated pressure unloading valve](#), [Pressure sequence valves](#) , [Pilot operated pressure sequence valve](#), [Direct operated pressure reducing valve](#), [Sandwich plate pressure relief valve](#), [Flow control valves](#), [Throttle and throttle check valves](#), [Throttle valves](#) , [Throttle check valves](#), [Sandwich plate check valve](#) , [One directional control valves](#) , [Double throttle check valves](#), [Restrict flow valves](#), [Sandwich flow valves](#) , [Pressure compensated valves](#) , [Pressure compensated flow control valves](#) , [Check valves](#), [Sandwich plate check valve](#), [Pilot operated check valve](#), [Check \(Non-return\) valves](#), [Hydraulic pilot operated check valve](#), [RVP series direct operated check valves](#) , [Direct operated check valves](#), [Cartridge Valves](#), [Reverse check cartridge valves](#), [Hydraulic operated check cartridge valves](#), [Check cartridge valves](#), [Pilot operated check relief cartridge valves](#), [YF Direct operated relief cartridge valves](#), [Hydraulic accessories](#), [Six-circuit gauge isolator](#), [Pressure gauge isolator](#), [Hydraulic Pressure switch](#) , [Pressure switch](#), [Piston type pressure switch](#) , [Valve subplates](#), [Manifold bar](#),

Ningbo Hanshang Hydraulic Co.,Ltd.
 Add: 118 Qiancheng Road, Zhenhai, Ningbo, Zhejiang Province
 Contact: Sean Zhou
 Tel: +86-574-86361025
 Fax: +86-574-86361266
 E-mail: sales@china-hydraulicvalves.com
 WebSite: <http://www.hydraulicvalvesf.com>