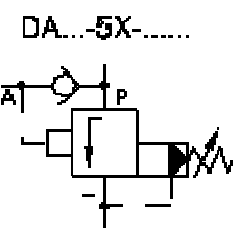


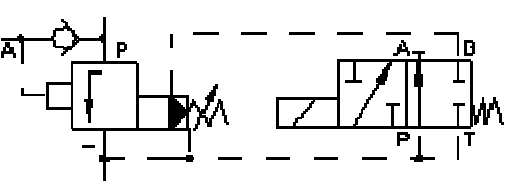
[China Pilot operated pressure unloading valve, Manufacturer, Supplier, Factory, Exporter in china](#)



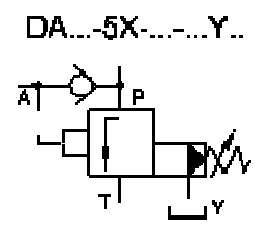
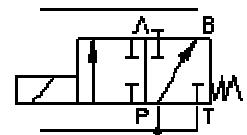
Symbol s:



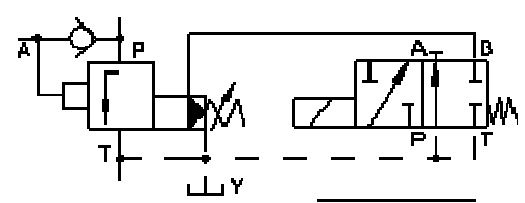
Normal closed
DAW...A...-5X-....



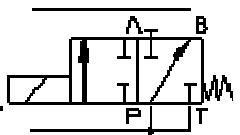
Normal open
DAW...B...-5X/...



Normal closed
DAW...A...-5X-....Y..



Normal open
DAW...B...-5X-....Y..

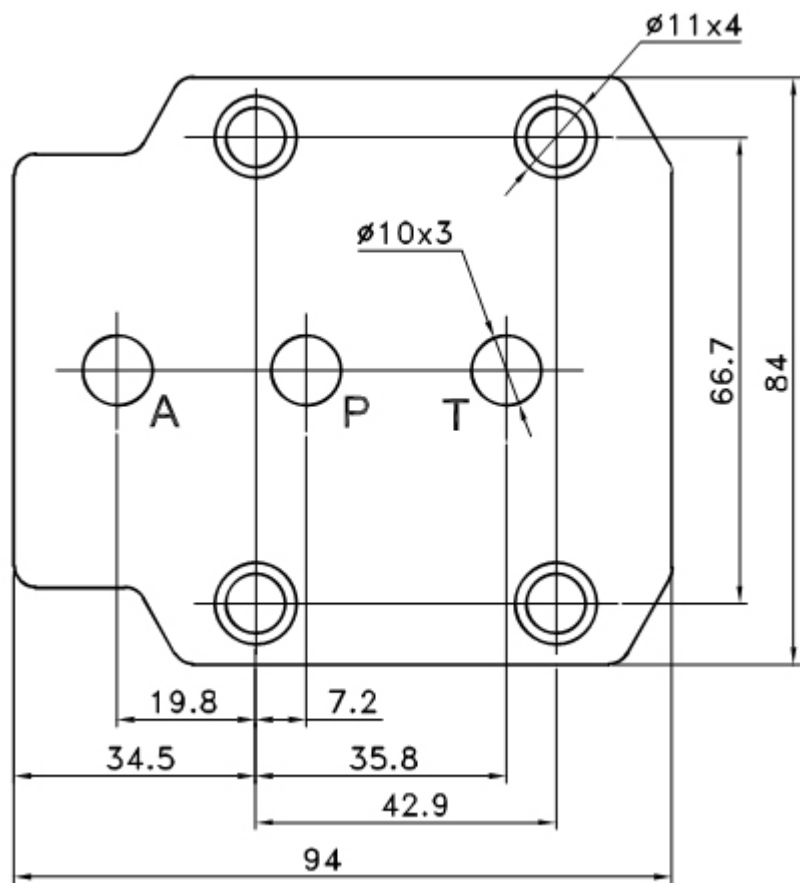


Pilot operated pressure unloading valves

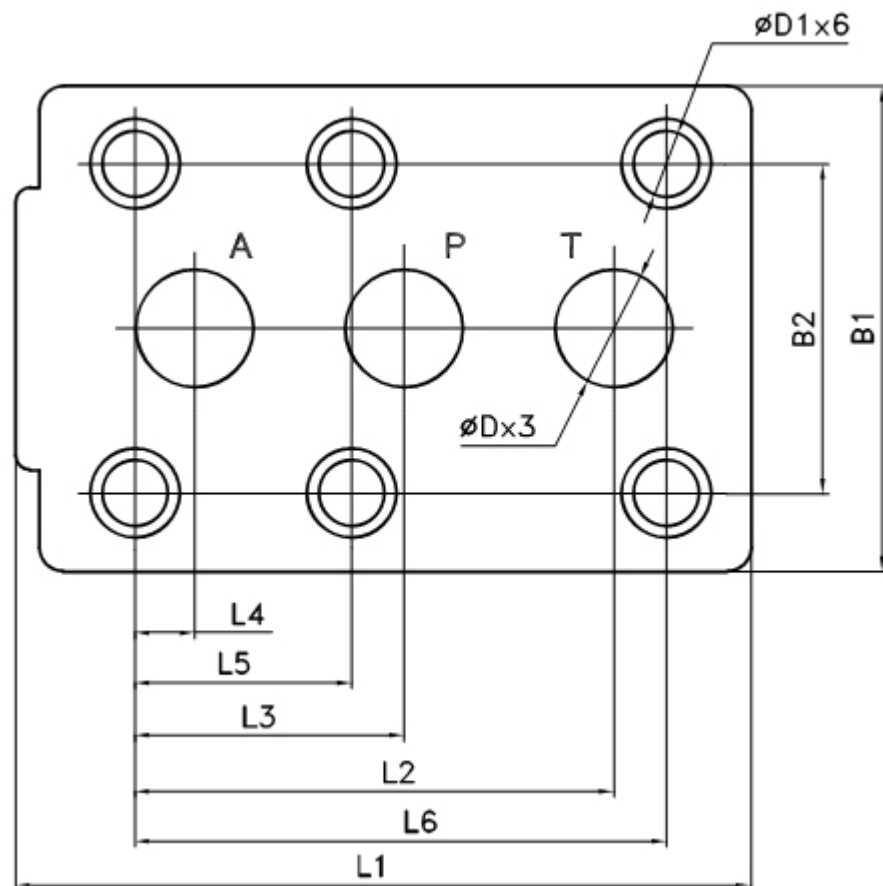
Model FT-DA / DAW series are pressure unloading valves with pilot operated, it can unload the pressure in lower pressure pump when high/low pressure pumps operating.

Characteristic:

- 1. Subplate mounting only.
- 2. Handwheel adjustment style available..
- 3. Directional control valve, optional



Model FT -- DA 25, DA32 dimensions for mounting



Size	L1	L2	L3	L4	L5	L6	B1	B2	D	D1
DA 20	158	101.6	57.1	12.7	46	112.7	102	70	25	18
DA 32	199	127	63.5	12.7	50.8	139.7	119	82.5	32	20



[Pilot operated pressure unloading valves](#)

[Directional spool valves](#), [Direct operated spool valve](#), [Hand level spool valve](#), [Solenoid controlled directional valve](#), [Hydraulic operation valve](#), [Solenoid operated directional spool valve](#), [Electrical operated directional valve](#), [Hydraulic Solenoid valve](#), [Solenoid controlled directional valve](#), [Electro-hydraulic operation valves](#), [Externally pilot operated valve](#), [Hydraulic directional control valve](#), [Hydraulic operation directional control valve](#), [Manually directional valves](#), [Mechanical operational valve](#), [Manually operational valve](#), [Directional valves pilot operated](#), [Solenoid operated directional poppet valve](#), [Poppet valve with solenoid operation](#), [Directional poppet valves](#), [Pressure control valves](#), [Pressure relief valves](#), [Pressure direct operated relief valve](#), [Pilot](#)

[operated pressure relief valve](#), [Pressure relief cartridge valve](#) , [Pressure reducing valves](#) , [Pilot operated pressure reducing valve](#), [Pressure unloading valves](#) , [Pressure relief cartridge valve](#), [Pilot operated pressure unloading valve](#), [Pressure sequence valves](#) , [Pilot operated pressure sequence valve](#), [Direct operated pressure reducing valve](#), [Sandwich plate pressure relief valve](#), [Flow control valves](#), [Throttle and throttle check valves](#), [Throttle valves](#) , [Throttle check valves](#), [Sandwich plate check valve](#) , [One directional control valves](#) , [Double throttle check valves](#), [Restrict flow valves](#), [Sandwich flow valves](#) , [Pressure compensated valves](#) , [Pressure compensated flow control valves](#) , [Check valves](#), [Sandwich plate check valve](#), [Pilot operated check valve](#), [Check\(Non-return\)valves](#), [Hydraulic pilot operated check valve](#), [RVP series direct operated check valves](#) , [Direct operated check valves](#), [Cartridge Valves](#), [Reverse check cartridge valves](#), [Hydraulic operated check cartridge valves](#), [Check cartridge valves](#), [Pilot operated check relief cartridge valves](#), [YF Direct operated relief cartridge valves](#), [Hydraulic accessories](#), [Six-circuit gauge isolator](#), [Pressure gauge isolator](#), [Hydraulic Pressure switch](#) , [Pressure switch](#), [Piston type pressure switch](#) , [Valve subplates](#), [Manifold bar](#),

Ningbo Hanshang Hydraulic Co., Ltd.

Add: 118 Qiancheng Road, Zhenhai, Ningbo, Zhejiang Province

Contact: Sean Zhou

Tel: 574-86361025

Fax: 574-86361266

E-mail: sales@china-hydraulicvalves.com

Website: <http://www.hydraulicvalvesf.com>
