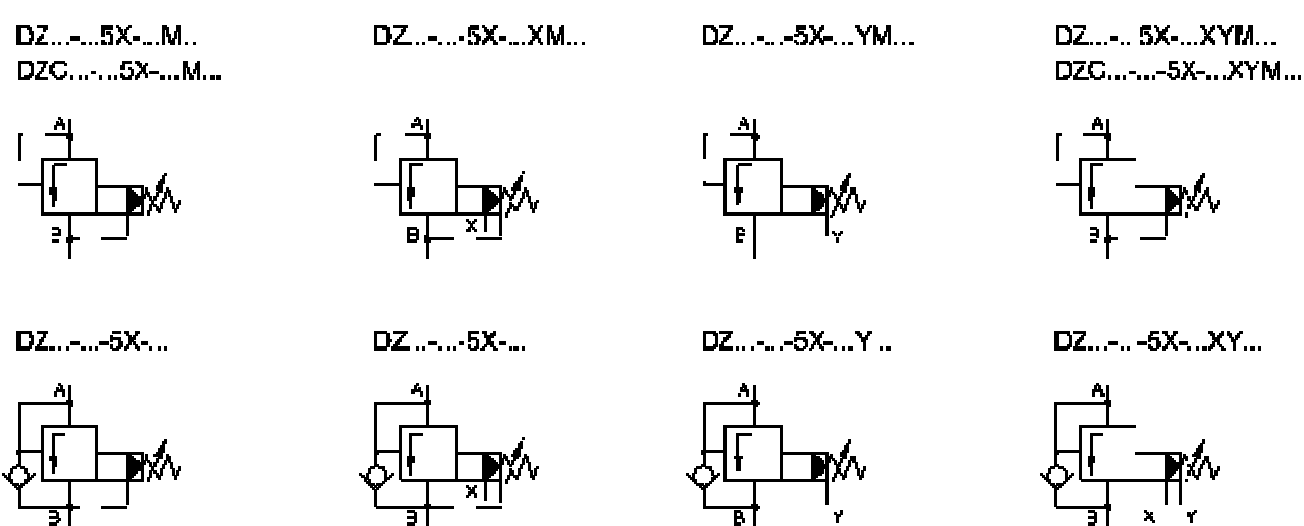


China Pilot operated pressure sequence valve, Manufacturer, Supplier, Factory, Exporter in china



Symbol s:



Pilot operated pressure sequence valve

Model FT-DZ series are pressure sequence valve with pilot operated, it can be used in a different way, such as controlling sequence, braking, unloading pressure or other functions.

Characteristics:

- 1. Subplate mounting available
- 2. Handwheel adjustment style available..
- 3. Four pressure range optional

FT -- DZ 10 -- 1 -- 5X -- 50

No code = Complete valve
 C = Pilot valve (Without size stated)
 C = Pilot valve with cartridge
 (With size 30 stated)

10 = Size 10
 20 = Size 25
 30 = Size 32

1 = Hand wheel
 2 = Hexagon and protective cap

Series no.

Settable pressure up to :
 50 = 50 (bar)
 100 = 100 (bar)
 200 = 200 (bar)
 315 = 315 (bar)

No code =Original black body color
 L= Body with blue color

No code = NBR seals for petroleum oils
 V = FPM seals for phosphate ester

No code = With check valve
 M = Without check valve

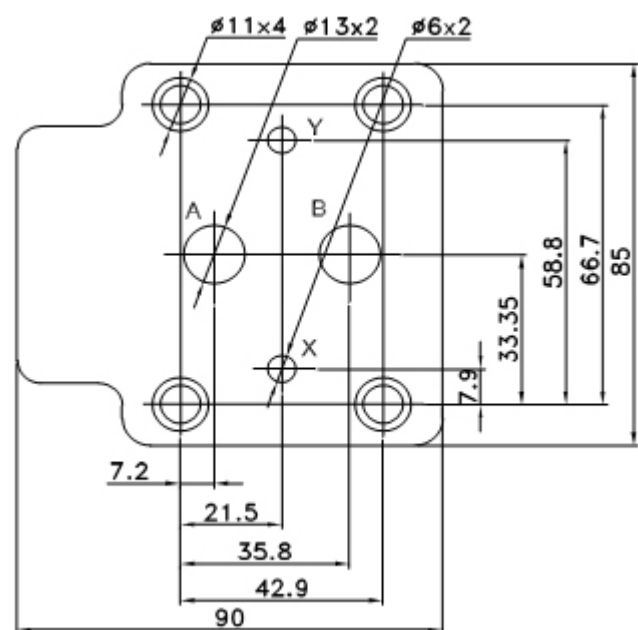
Pilot oil supply and drain:
 No code = Internally piloted, internally drained
 X = Externally piloted, internally drained
 Y = Internally piloted, externally drained
 XY = Externally piloted, externally drained



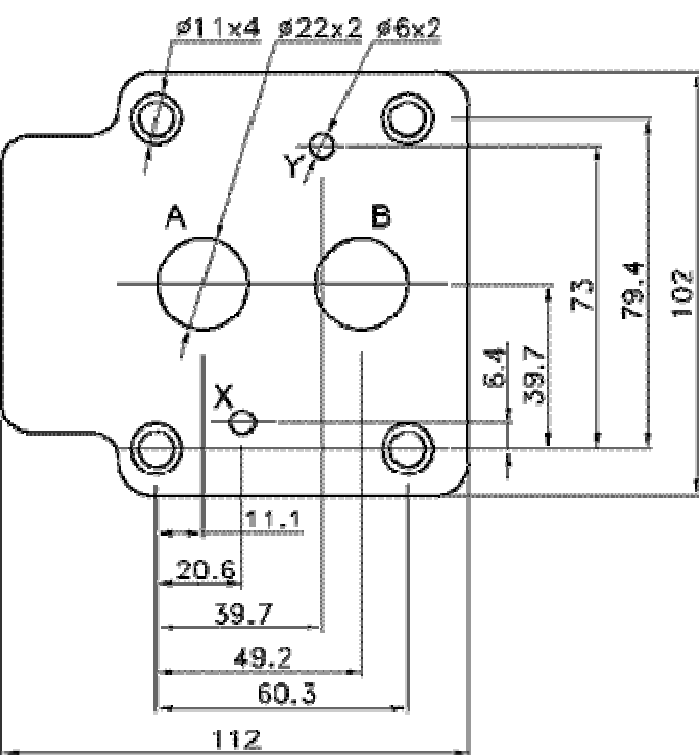
Technical data

General information			
Size	10	20	30
Max. Flow Rate (L/min.)	200	400	600
Max. Operating Pressure A, B, X ports (bar)	315	315	315
Max. Back Pressure Y Port (bar)	315	315	315
Fluid Contamination	Max. allowed degree of contamination is to NAS1638 Class9. Recommend: A filter with a minimum filtrating rate of $\beta_{10} \geq 75$		

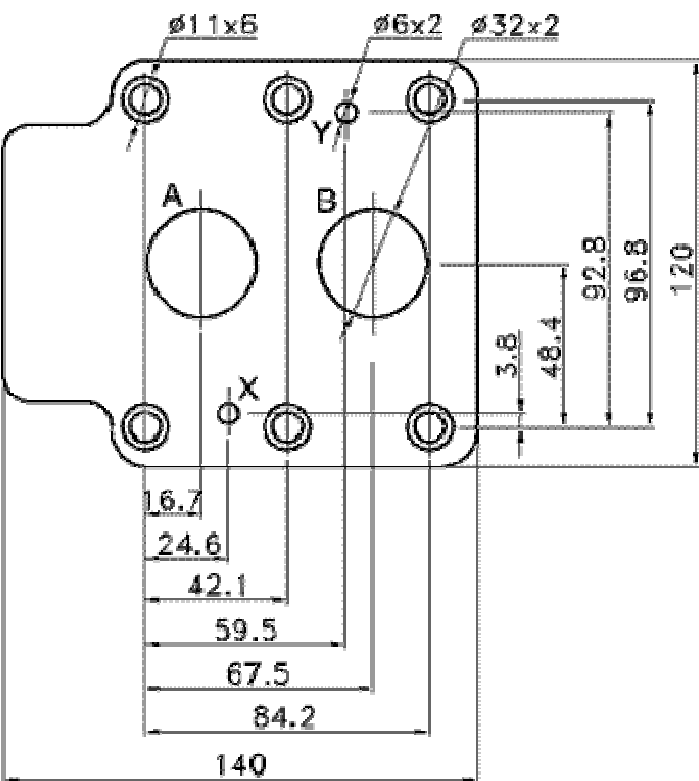
Model FT -- DZ 10 dimensions for mounting



Model FT -- DZ 20 dimensions for mounting



Model FT -- DZ 30 dimensions for mounting



[Pilot operated pressure sequence valve-pro](#)

[Directional spool valves](#), [Direct operated spool valve](#), [Hand level spool valve](#), [Solenoid controlled directional valve](#), [Hydraulic operation valve](#), [Solenoid operated directional spool valve](#), [Electrical operated directional valve](#), [Hydraulic Solenoid valve](#), [Solenoid controlled directional valve](#), [Electro-hydraulic operation valves](#), [Externally pilot operated valve](#), [Hydraulic directional control valve](#), [Hydraulic operation directional control valve](#), [Manually directional valves](#), [Mechanical operational valve](#), [Manually operational valve](#), [Directional valves pilot operated](#), [Solenoid operated directional poppet valve](#), [Poppet valve with solenoid operation](#), [Directional poppet valves](#), [Pressure control valves](#), [Pressure relief valves](#), [Pressure direct operated relief valve](#), [Pilot operated pressure relief valve](#), [Pressure relief cartridge valve](#), [Pressure reducing valves](#), [Pilot operated pressure reducing valve](#), [Pressure unloading valves](#), [Pressure relief cartridge valve](#), [Pilot operated pressure unloading valve](#), [Pressure sequence valves](#), [Pilot operated pressure sequence valve](#), [Direct operated pressure reducing valve](#), [Sandwich plate pressure relief valve](#), [Flow control valves](#), [Throttle and throttle check valves](#), [Throttle valves](#), [Throttle check valves](#), [Sandwich plate](#)

[check valve](#) , [One directional control valves](#) , [Double throttle check valves](#),[Restrict flow valves](#),[Sandwich flow valves](#) , [Pressure compensated valves](#) , [Pressure compensated flow control valves](#) , [Check valves](#),[Sandwich plate check valve](#),[Pilot operated check valve](#),[Check\(Non-return\)valves](#),[Hydraulic pilot operated check valve](#),[RVP series direct operated check valves](#) , [Direct operated check valves](#),[Cartridge Valves](#),[Reverse check cartridge valves](#),[Hydraulic operated check cartridge valves](#),[Check cartridge valves](#),[Pilot operated check relief cartridge valves](#),[YF Direct operated relief cartridge valves](#),[Hydraulic accessories](#),[Six-circuit gauge isolator](#),[Pressure gauge isolator](#),[Hydraulic Pressure switch](#) , [Pressure switch](#),[Piston type pressure switch](#) , [Valve subplates](#),[Manifold bar](#),

Ningbo Hanshang Hydraulic Co., Ltd.

Add: 118 Qiancheng Road, Zhenhai, Ningbo, Zhejiang Province

Contact: Sean Zhou

Tel: 574-86361025

Fax: 574-86361266

E-mail: sales@china-hydraulicvalves.com

Website: <http://www.hydraulicvalvesf.com>
