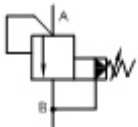


# [China Pilot operated pressure relief valve, Manufacturer, Supplier, Factory, Exporter in china](#)

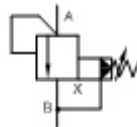


Symbol s:

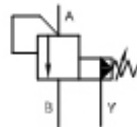
DB...-5X/.....



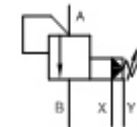
DB...-5X/...X...



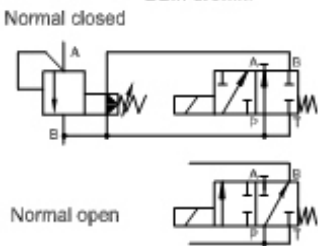
DB...-5X/...Y...



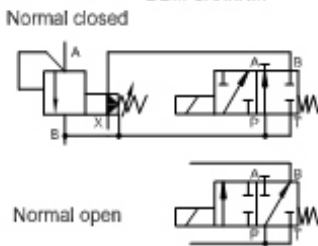
DB...-5X/...XY...



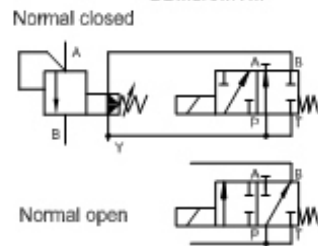
DB...-5X/.....



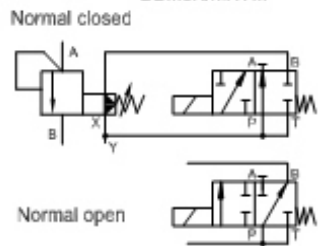
DB...-5X/...X...



DB...-5X/...Y...



DB...-5X/...XY...



## Pilot operated pressure relief valves

Model FT-DB / DBW series are pilot operated pressure relief valves, it can limit the max. operating pressure in a main system, and unload the system pressure if add the solenoid valve above. The threaded in line or subplate mounting can be chosen optional.

## Characteristic:

- 1. Different mounting styles, threaded and subplate mounting, optional.
- 2. Handwheel adjustment style available.
- 3. Directional control valve, optional

FT -- DB . . . . . 10 . . . . . 1 5X -- 50 . . . . . -- . . . . .

No code = Without directional valve  
W = With directional valve

No code = Complete valve  
C = Pilot valve (Without size stated)  
C = Pilot valve with cartridge (With size 30 stated)

10 = Size 10  
Subplate mounting: 10, 20 30  
Threaded connection: 10, 15, 20, 25, 30

A = Normal closed  
B = Normal open  
"A", "B" code available only amounted with directional valve

No code = Subplate mounting  
G = Thread connection

1 = Hand wheel  
2 = Hexagon and protective cap  
3 = Lockable knob

Series no.

Settable pressure up to :  
50 = 50 (bar)  
100 = 100 (bar)  
200 = 200 (bar)  
315 = 315 (bar)  
350 = 350 (bar)

No code =Original black body color  
L = Body with blue color

No code = NBR seals for petroleum oils  
V = FPM seals for phosphate ester

No code = Inch thread  
2 = Metric thread

Z4 = Angled plug connector  
Z5L = Angled plug and light

N = With manual override  
No code = Without manual override

D24 = DC24V ; D12 = DC12V (Direct current)  
W220 = AC220V ; W110 = AC110V (Alternating current)

No code = Standard  
U = With min. opening pressure

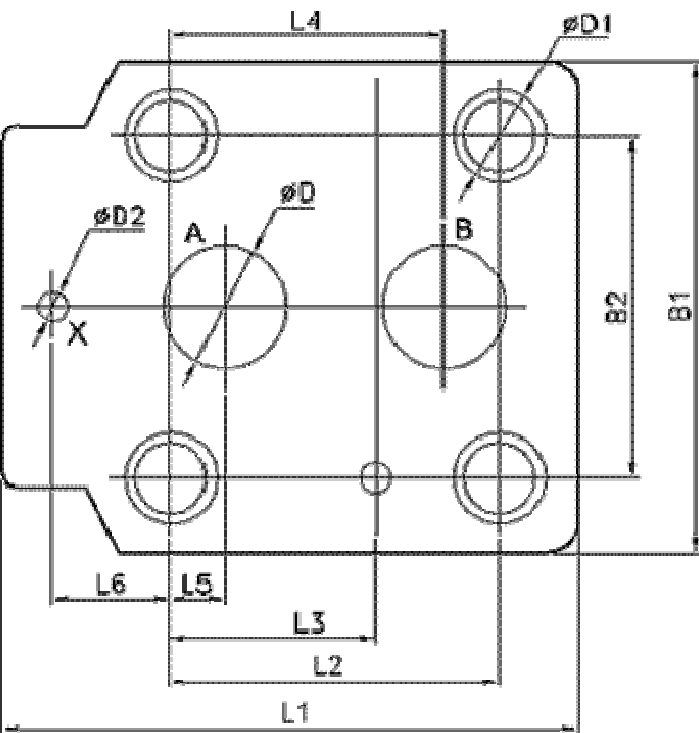
Pilot oil supply and drain:  
No code = Internally piloted, internally drained  
X = Externally piloted, internally drained  
Y = Internally piloted, externally drained  
XY = Externally piloted, externally drained



Technical data

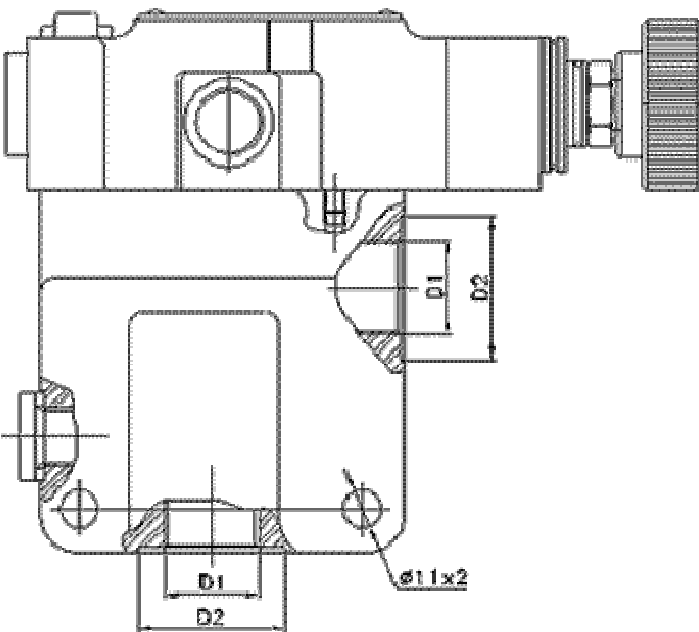
General information			
Size	10	20	30
Max. Operating Pressure A, B, X Ports (bar)	350	350	350
Max. Back Pressure Y Port (bar)	DB	315	315
	DBW for DC Voltage	210	210
	DBW for AC Voltage	160	160
Max. Flow Rate (L/min.)	250	500	650
Fluid Contamination	Max. allowed degree of contamination is to NAS1638 Class9. Recommend: A filter with a minimum filtrating rate of $\beta_{10} \geq 75$		

Model FT -- DB / DBW subplate for mounting



Size	L1	L2	L3	L4	L5	L6	B1	B2	D	D1	D2
DB/DBW 10	91	53.8	22.1	47.5	22.1	0	78	53.8	12	14	6
DB/DBW 20	116	66.7	33.4	55.6	11.1	23.8	100	70	25	18	6
DB/DBW 30	148	88.9	44.5	76.2	12.7	31.8	115	82.6	32	21	7

Model FT -- DB / DBW... G threaded connections for mounting



Type	D1		D2
	Metric	Inch (BSP)	

DB10G	M18*1.5	G 1/2	34
DB15G	M27*2	G 3/4	42
DB20G	M33*2	G 1	47
DB25G	M42*2	G1 1/4	58
DB30G	M48*2	G1 1/2	65



[Pilot operated pressure relief valves](#)

[Directional spool valves](#), [Direct operated spool valve](#), [Hand level spool valve](#) , [Solenoid controlled directional valve](#) , [Hydraulic operation valve](#) , [Solenoid operated directional spool valve](#), [Electrical operated directional valve](#) , [Hydraulic Solenoid valve](#) , [Solenoid controlled directional valve](#) , [Electro-hydraulic operation valves](#), [Externally pilot operated valve](#) , [Hydraulic directional control valve](#), [Hydraulic operation directional control valve](#) , [Manually directional valves](#), [Mechanical operational valve](#) , [Manually operational valve](#), [Directional valves pilot operated](#) , [Solenoid operated directional poppet valve](#), [Poppet valve with solenoid operation](#) , [Directional poppet valves](#) , [Pressure control valves](#), [Pressure relief valves](#), [Pressure direct operated relief valve](#) , [Pilot operated pressure relief valve](#), [Pressure relief cartridge valve](#) , [Pressure reducing valves](#) , [Pilot operated pressure reducing valve](#), [Pressure unloading valves](#) , [Pressure relief cartridge valve](#), [Pilot operated pressure unloading valve](#), [Pressure sequence valves](#) , [Pilot operated pressure sequence valve](#), [Direct operated pressure reducing valve](#), [Sandwich plate pressure relief valve](#), [Flow control valves](#), [Throttle and throttle check valves](#), [Throttle valves](#) , [Throttle check valves](#), [Sandwich plate check valve](#) , [One directional control valves](#) , [Double throttle check valves](#), [Restrict flow valves](#), [Sandwich flow valves](#) , [Pressure compensated valves](#) , [Pressure compensated flow control valves](#) , [Check valves](#), [Sandwich plate check valve](#), [Pilot operated check valve](#), [Check\(Non-return\)valves](#), [Hydraulic pilot operated check valve](#), [RVP series direct operated check valves](#) , [Direct operated check valves](#), [Cartridge Valves](#), [Reverse check cartridge valves](#), [Hydraulic operated check cartridge valves](#), [Check cartridge valves](#), [Pilot operated check relief cartridge valves](#), [YF Direct operated relief cartridge valves](#), [Hydraulic accessories](#), [Six-circuit gauge isolator](#), [Pressure gauge isolator](#), [Hydraulic Pressure switch](#) , [Pressure switch](#), [Piston type pressure switch](#) , [Valve subplates](#), [Manifold bar](#),

Ningbo Hanshang Hydraulic Co., Ltd.

Add: 118 Qiancheng Road, Zhenhai, Ningbo, Zhejiang Province

Contact: Sean Zhou

Tel: 574-86361025

Fax: 574-86361266

E-mail: [sales@china-hydraulicvalves.com](mailto:sales@china-hydraulicvalves.com)

