

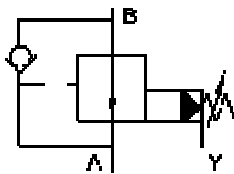
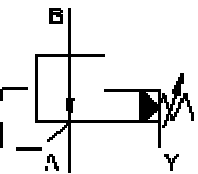
[China Pilot operated pressure reducing valve, Manufacturer, Supplier, Factory, Exporter in china](#)



Symbol s:

DR...-5X/...YM...

DR...-5X/...Y...  
(Only for subplate)



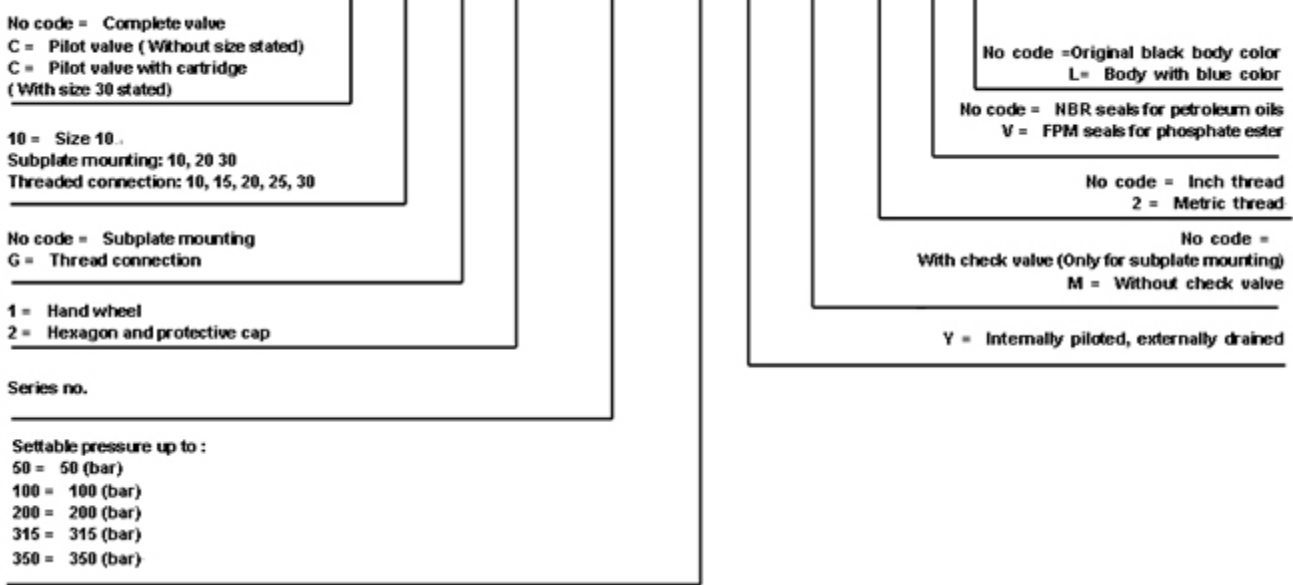
Pilot operated pressure reducing valve

Model FT-DR series are pilot operated pressure reducing valves, it can reduce the pressure in a certain circuit of the main system.

Characteristic:

- 1. Subplat, threaded and manifold are available.
- 2. Standard mounting dimension for a replacement.
- 3. Reverse free-flow check valve, optional

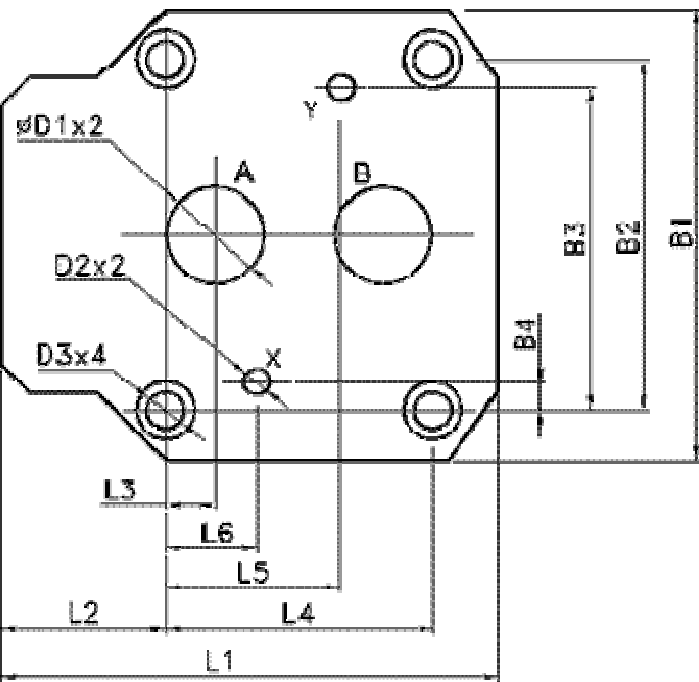
FT -- DR 10 1 -- 5X -- 50 Y



Technical data

| General information          |                     |  |      |      |      |      |
|------------------------------|---------------------|--|------|------|------|------|
| Size                         |                     | DR10   | DR15 | DR20 | DR25 | DR30 |
| Max. flow rate<br>( L/min. ) | Subplate mounting   | 150  | /    | 300  | /    | 400  |
|                              | Threaded connection | 150  | 300  | 300  | 400  | 400  |
| Operating pressure (bar)     |                     | 315  |      |      |      |      |
| Back pressure Y port (bar)   |                     | 315  |      |      |      |      |
| Fluid Contamination          |                     | Max. allowed degree of contamination is to NAS1638 Class9.<br>Recommend: A filter with a minimum filtrating rate of $\beta_{10} \geq 75$ |      |      |      |      |

Model FT -- DR subplate for mounting



| Size  | L1  | L2   | L3   | L4   | L5   | L6   | B1  | B2   | B3   | B4  | D1 | D2 | D3 |
|-------|-----|------|------|------|------|------|-----|------|------|-----|----|----|----|
| DR 10 | 90  | 35   | 7.2  | 42.9 | 21.5 | 21.5 | 85  | 66.7 | 58.8 | 7.9 | 13 | 6  | 11 |
| DR 20 | 112 | 37   | 11.1 | 60.3 | 39.7 | 20.6 | 102 | 79.4 | 73   | 6.4 | 25 | 6  | 11 |
| DR 30 | 140 | 31.5 | 16.7 | 84.2 | 59.5 | 24.6 | 120 | 96.8 | 92.8 | 3.8 | 32 | 6  | 11 |



[Pilot operated pressure reducing valve-02](#)

[Directional spool valves](#), [Direct operated spool valve](#), [Hand level spool valve](#), [Solenoid controlled directional valve](#), [Hydraulic operation valve](#), [Solenoid operated directional spool valve](#), [Electrical operated directional valve](#), [Hydraulic Solenoid valve](#), [Solenoid controlled directional valve](#), [Electro-hydraulic operation valves](#), [Externally pilot operated valve](#), [Hydraulic directional control valve](#), [Hydraulic operation directional control valve](#), [Manually directional valves](#), [Mechanical operational valve](#), [Manually operational valve](#), [Directional valves pilot operated](#), [Solenoid operated directional poppet valve](#), [Poppet valve with solenoid operation](#), [Directional poppet valves](#), [Pressure control valves](#), [Pressure relief valves](#), [Pressure direct operated relief valve](#), [Pilot operated pressure relief valve](#), [Pressure relief cartridge valve](#), [Pressure reducing valves](#), [Pilot operated pressure reducing valve](#), [Pressure unloading valves](#), [Pressure relief cartridge valve](#), [Pilot operated pressure unloading valve](#), [Pressure sequence valves](#), [Pilot operated pressure sequence valve](#), [Direct operated pressure reducing valve](#), [Sandwich plate pressure relief valve](#), [Flow control valves](#), [Throttle and throttle check valves](#), [Throttle valves](#), [Throttle check valves](#), [Sandwich plate check valve](#), [One directional control valves](#), [Double throttle check valves](#), [Restrict flow valves](#), [Sandwich flow valves](#), [Pressure compensated valves](#),

[Pressure compensated flow control valves](#) , [Check valves](#), [Sandwich plate check valve](#), [Pilot operated check valve](#), [Check \(Non-return\) valves](#), [Hydraulic pilot operated check valve](#), [RVP series direct operated check valves](#) , [Direct operated check valves](#), [Cartridge Valves](#), [Reverse check cartridge valves](#), [Hydraulic operated check cartridge valves](#), [Check cartridge valves](#), [Pilot operated check relief cartridge valves](#), [YF Direct operated relief cartridge valves](#), [Hydraulic accessories](#), [Six-circuit gauge isolator](#), [Pressure gauge isolator](#), [Hydraulic Pressure switch](#) , [Pressure switch](#), [Piston type pressure switch](#) , [Valve subplates](#), [Manifold bar](#).

---

Ningbo Hanshang Hydraulic Co., Ltd.

Add: 118 Qiancheng Road, Zhenhai, Ningbo, Zhejiang Province

Contact: Sean Zhou

Tel: 574-86361025

Fax: 574-86361266

E-mail: [sales@china-hydraulicvalves.com](mailto:sales@china-hydraulicvalves.com)

Website: <http://www.hydraulicvalvesf.com>

---