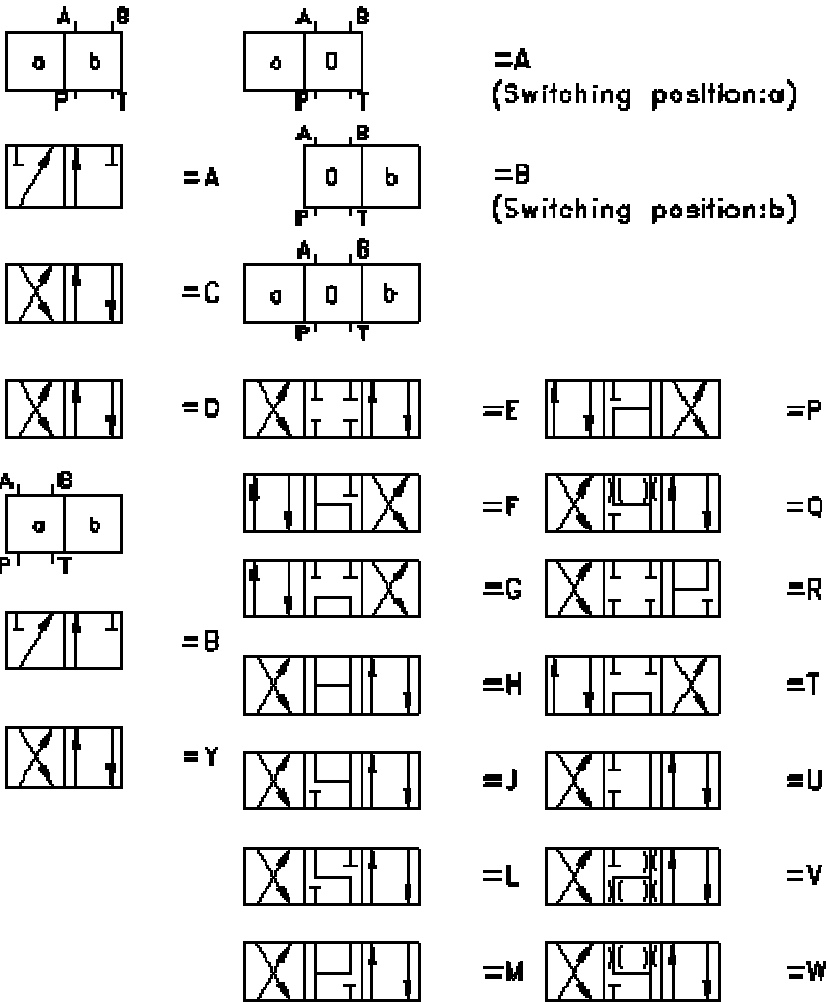




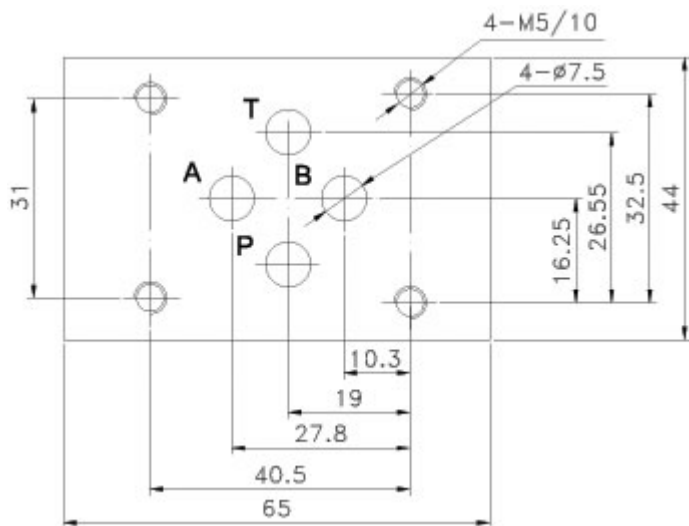
**Fluid Contamination**

Max. allowed degree of contamination is to NAS1638 Class9.  
 Recommend: A filter with a minimum filtrating rate of B10;Ý75

**Spool symbols**



**Model FT -- WMM 6 Dimensions for mounting**



[Manually Directional Valves-02](#)



[Manually Directional Valves-01](#)

[Directional spool valves](#), [Direct operated spool valve](#), [Hand level spool valve](#) , [Solenoid controlled directional valve](#) , [Hydraulic operation valve](#) , [Solenoid operated directional spool valve](#), [Electrical operated](#)

[directional valve](#) , [Hydraulic Solenoid valve](#) , [Solenoid controlled directional valve](#) , [Electro-hydraulic operation valves](#),[Externally pilot operated valve](#) , [Hydraulic directional control valve](#),[Hydraulic operation directional control valve](#) , [Manually directional valves](#),[Mechanical operational valve](#) , [Manually operational valve](#),[Directional valves pilot operated](#) , [Solenoid operated directional poppet valve](#),[Poppet valve with solenoid operation](#) , [Directional poppet valves](#) , [Pressure control valves](#),[Pressure relief valves](#),[Pressure direct operated relief valve](#) , [Pilot operated pressure relief valve](#),[Pressure relief cartridge valve](#) , [Pressure reducing valves](#) , [Pilot operated pressure reducing valve](#),[Pressure unloading valves](#) , [Pressure relief cartridge valve](#),[Pilot operated pressure unloading valve](#),[Pressure sequence valves](#) , [Pilot operated pressure sequence valve](#),[Direct operated pressure reducing valve](#),[Sandwich plate pressure relief valve](#),[Flow control valves](#),[Throttle and throttle check valves](#),[Throttle valves](#) , [Throttle check valves](#),[Sandwich plate check valve](#) , [One directional control valves](#) , [Double throttle check valves](#),[Restrict flow valves](#),[Sandwich flow valves](#) , [Pressure compensated valves](#) , [Pressure compensated flow control valves](#) , [Check valves](#),[Sandwich plate check valve](#),[Pilot operated check valve](#),[Check\(Non-return\)valves](#),[Hydraulic pilot operated check valve](#),[RVP series direct operated check valves](#) , [Direct operated check valves](#),[Cartridge Valves](#),[Reverse check cartridge valves](#),[Hydraulic operated check cartridge valves](#),[Check cartridge valves](#),[Pilot operated check relief cartridge valves](#),[YF Direct operated relief cartridge valves](#),[Hydraulic accessories](#),[Six-circuit gauge isolator](#),[Pressure gauge isolator](#),[Hydraulic Pressure switch](#) , [Pressure switch](#),[Piston type pressure switch](#) , [Valve subplates](#),[Manifold bar](#),

---

Ningbo Hanshang Hydraulic Co.,Ltd.

Add: 118 Qiancheng Road, Zhenhai, Ningbo, Zhejiang Province

Contact: Sean Zhou

Tel: +86-574-86361025

Fax: +86-574-86361266

E-mail:[sales@china-hydraulicvalves.com](mailto:sales@china-hydraulicvalves.com)

WebSite: <http://www.hydraulicvalvesf.com>

---