



FT — BM 6 — 1 S 2 RE

BM = Bar manifold

6 = Size 6

Number of station

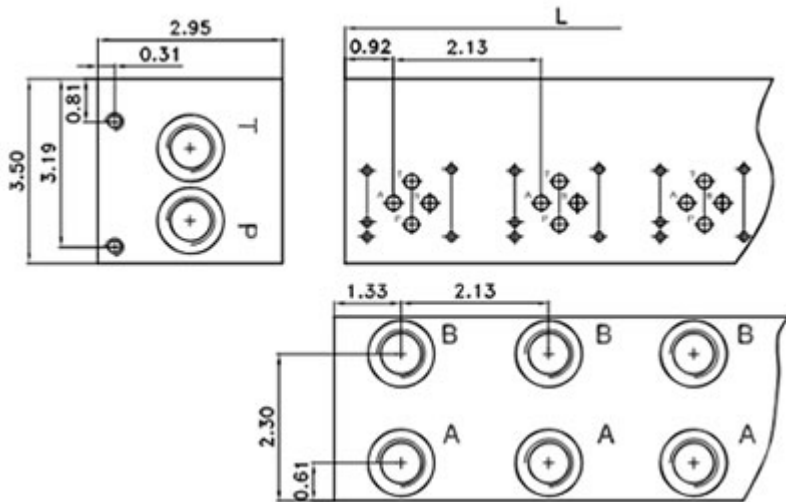
RE = With plug-in valve DBDS6

2 = Inch (BSP)

S = Steel
(The max. operation 350bar)
A = Aluminum
(The max. operation 200bar)
I = Ductile iron
(The max. operation 300bar)
For order "P",
please contact us before ordering in case not available)

EXPAND IMAGE

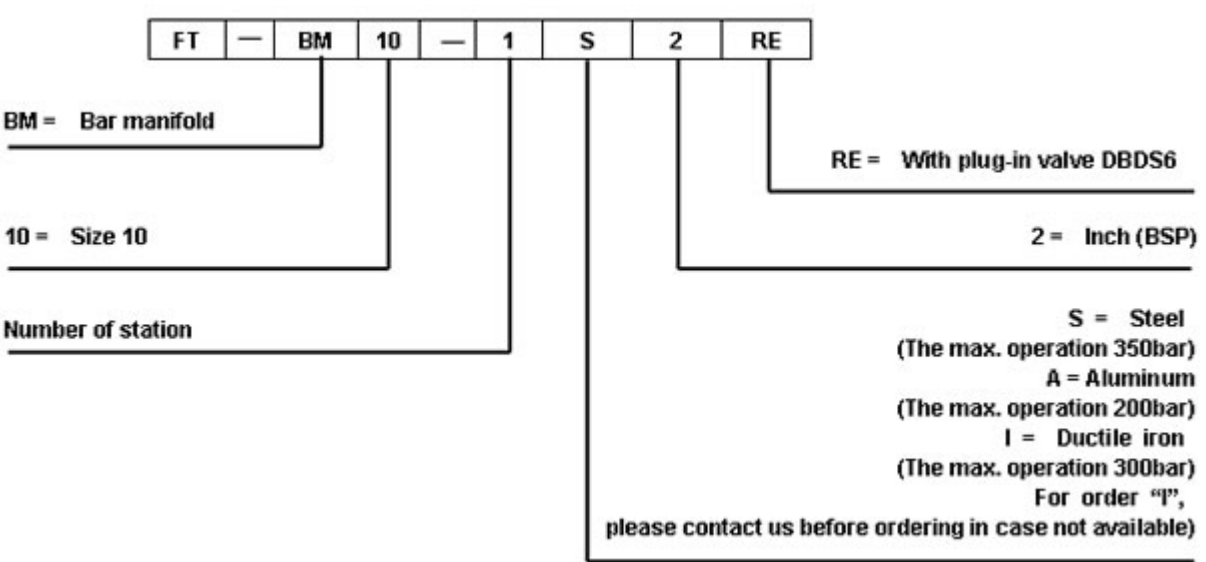
Model FT "C BM 6 dimensions for mounting



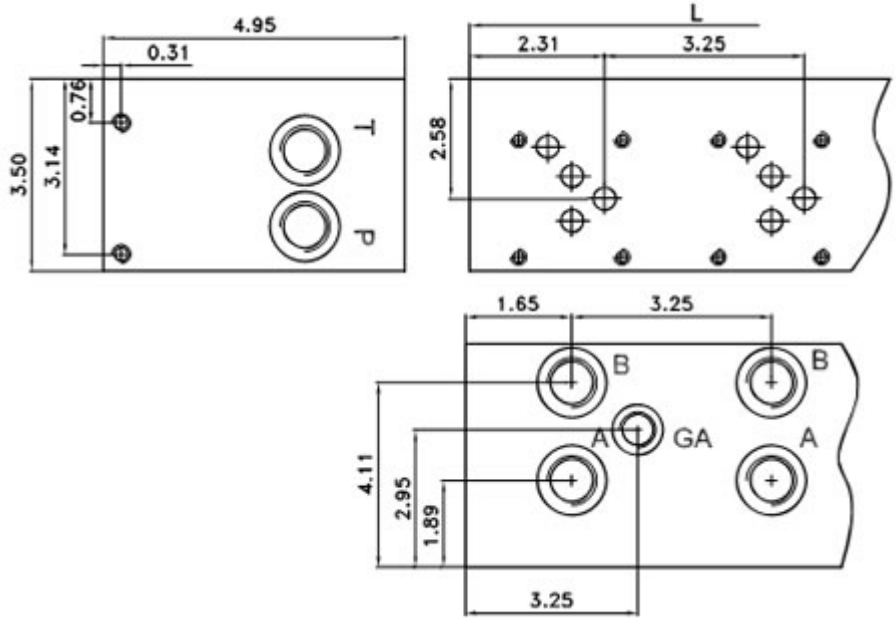
General information

Number of	1	2	3	4	5	6	7	8
-----------	---	---	---	---	---	---	---	---

"L" Dimensions (Inch)	3.95	4.88	7.00	9.12	11.25	13.38	15.50	17.63
Port threaded (Inch)	P&T = 1/2"		A&B = 3/8"			GA = 1/4"		
Please contact us for more different manifolds								

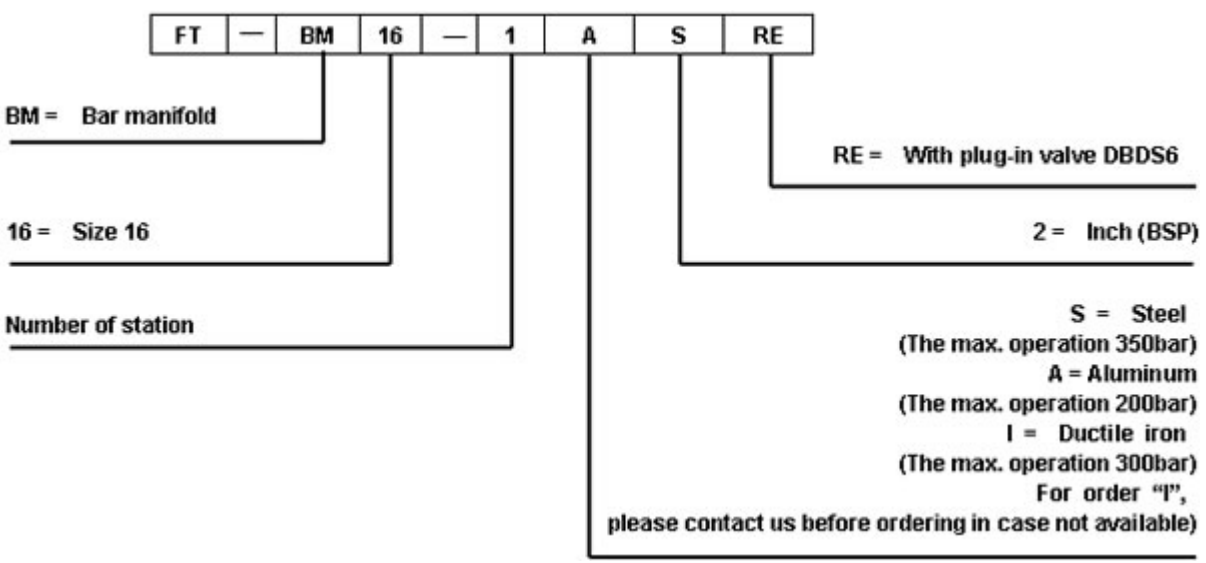


Model FT - C BM 10 dimensions for mounting

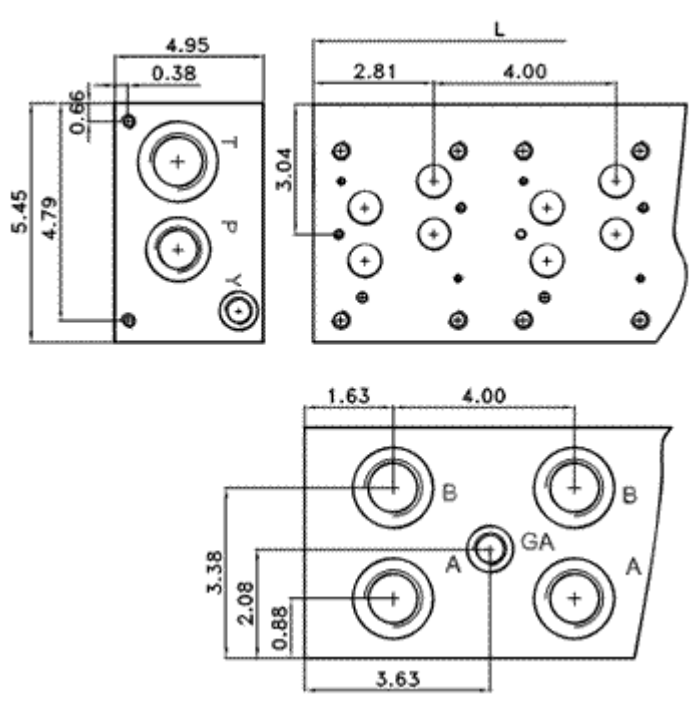


General information							
Number of stations	1	2	3	4	5	6	7
"L" Dimensions (Inch)	5.00	6.88	10,13	13.38	16.63	19.88	23.13

Port threaded (Inch)	P&T = 3/4"	A&B = 3/4"	GA = 1/4"
Please contact us for more different manifolds			



Model FT -- BM16 dimensions for mounting



General information						
Number of stations	1	2	3	4	5	6
"L" Dimensions (Inch)	4.03	8.00	12.00	16.00	20.00	24.00
Port threaded (Inch)	T = 1		P+A&B = 3/4		GA,X,Y = 1/4	
Please contact us for more different manifolds						



[Manifold bar-pro](#)

[Directional spool valves](#), [Direct operated spool valve](#), [Hand level spool valve](#), [Solenoid controlled directional valve](#), [Hydraulic operation valve](#), [Solenoid operated directional spool valve](#), [Electrical operated directional valve](#), [Hydraulic Solenoid valve](#), [Solenoid controlled directional valve](#), [Electro-hydraulic operation valves](#), [Externally pilot operated valve](#), [Hydraulic directional control valve](#), [Hydraulic operation directional control valve](#), [Manually directional valves](#), [Mechanical operational valve](#), [Manually operational valve](#), [Directional valves pilot operated](#), [Solenoid operated directional poppet valve](#), [Poppet valve with solenoid operation](#), [Directional poppet valves](#), [Pressure control valves](#), [Pressure relief valves](#), [Pressure direct operated relief valve](#), [Pilot operated pressure relief valve](#), [Pressure relief cartridge valve](#), [Pressure reducing valves](#), [Pilot operated pressure reducing valve](#), [Pressure unloading valves](#), [Pressure relief cartridge valve](#), [Pilot operated pressure unloading valve](#), [Pressure sequence valves](#), [Pilot operated pressure sequence valve](#), [Direct operated pressure reducing valve](#), [Sandwich plate pressure relief valve](#), [Flow control valves](#), [Throttle and throttle check valves](#), [Throttle valves](#), [Throttle check valves](#), [Sandwich plate check valve](#), [One directional control valves](#), [Double throttle check valves](#), [Restrict flow valves](#), [Sandwich flow valves](#), [Pressure compensated valves](#), [Pressure compensated flow control valves](#), [Check valves](#), [Sandwich plate check valve](#), [Pilot operated check valve](#), [Check \(Non-return\) valves](#), [Hydraulic pilot operated check valve](#), [RVP series direct operated check valves](#), [Direct operated check valves](#), [Cartridge Valves](#), [Reverse check cartridge valves](#), [Hydraulic operated check cartridge valves](#), [Check cartridge valves](#), [Pilot operated check relief cartridge valves](#), [YF Direct operated relief cartridge valves](#), [Hydraulic accessories](#), [Six-circuit gauge isolator](#), [Pressure gauge isolator](#), [Hydraulic Pressure switch](#), [Pressure switch](#), [Piston type pressure switch](#), [Valve subplates](#), [Manifold bar](#),

Ningbo Hanshang Hydraulic Co.,Ltd.
Add: 118 Qiancheng Road, Zhenhai, Ningbo, Zhejiang Province
Contact: Sean Zhou
Tel: +86-574-86361025
Fax: +86-574-86361266
E-mail: sales@china-hydraulicvalves.com
WebSite: <http://www.hydraulicvalvesf.com>