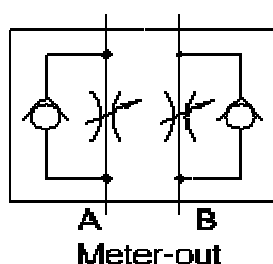
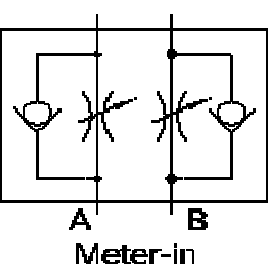


China Double throttle check valves, Manufacturer, Supplier, Factory, Exporter in china



Symbol s:



Double throttle check valves

Model FT-Z2FS series are double throttle/check valves, it restricts the flow or from actuator service ports (A and B) of a directional valve.

Characteristic:

- 1. Meter-in or meter out control as indicated
- 2. Reducing flow in actuator lines, control speed of the actuator in both directions
- 3. Screw adjustment with locknut with good performance

FT	-	Z2FS	6	40	-	S		L
----	---	------	---	----	---	---	--	---

6 = Size 6, 10 = Size 10
16 = Size 16, 22 = Size 22

Series no.
40 = Size 6, 30 = Size 16
20 = Size 10, 50 = Size 22

No code = Original black body color
L = Body with blue color

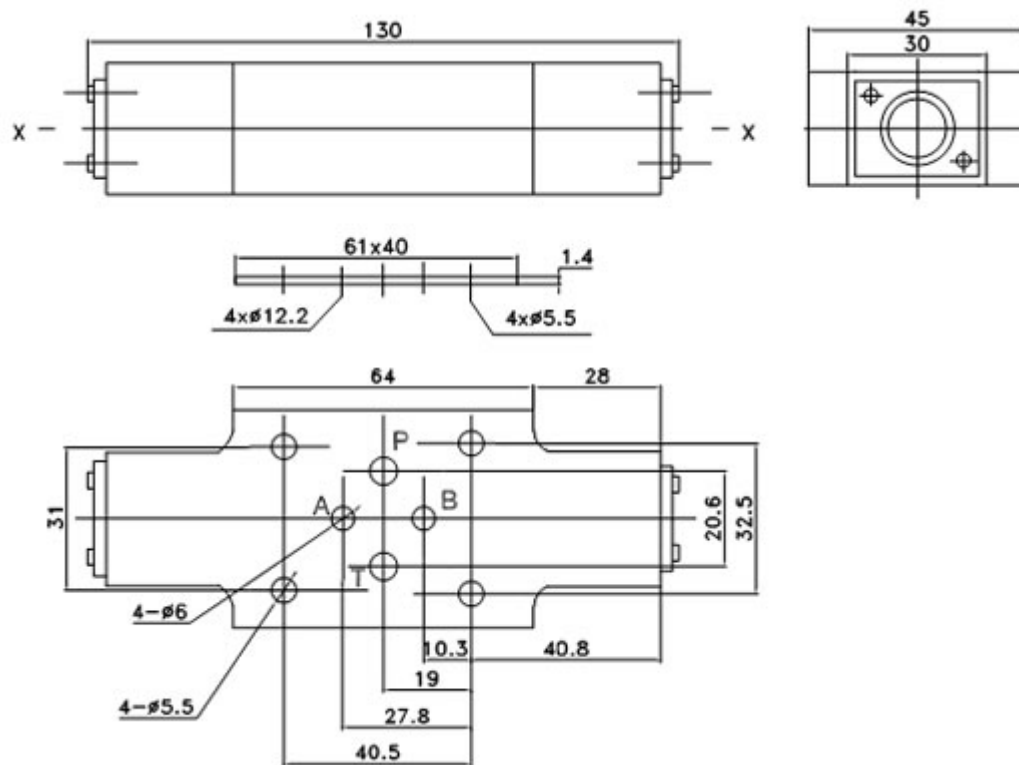
No code = NBR seals for petroleum oils
V = FPM seals for phosphate ester

S = Meter-in control
S2 = Meter-out control

Technical data

General information				
Size	6	10	16	22
Flow rate (L/min.)	80	160	250	350
Operating pressure (bar)	315	315	350	350

Model FT -- Z2FS6 dimensions for mounting



Model FT -- Z2SFS 10 dimensions for mounting



[Double throttle check valve](#)

[Directional spool valves](#), [Direct operated spool valve](#), [Hand level spool valve](#), [Solenoid controlled directional valve](#), [Hydraulic operation valve](#), [Solenoid operated directional spool valve](#), [Electrical operated directional valve](#), [Hydraulic Solenoid valve](#), [Solenoid controlled directional valve](#), [Electro-hydraulic operation valves](#), [Externally pilot operated valve](#), [Hydraulic directional control valve](#), [Hydraulic operation directional control valve](#), [Manually directional valves](#), [Mechanical operational valve](#), [Manually operational valve](#), [Directional valves pilot operated](#), [Solenoid operated directional poppet valve](#), [Poppet valve with solenoid operation](#), [Directional poppet valves](#), [Pressure control valves](#), [Pressure relief valves](#), [Pressure direct operated relief valve](#), [Pilot operated pressure relief valve](#), [Pressure relief cartridge valve](#), [Pressure reducing valves](#), [Pilot operated pressure reducing valve](#), [Pressure unloading valves](#), [Pressure relief cartridge valve](#), [Pilot operated pressure unloading valve](#), [Pressure sequence valves](#), [Pilot operated pressure sequence valve](#), [Direct operated pressure reducing valve](#), [Sandwich plate pressure relief valve](#), [Flow control valves](#), [Throttle and throttle check valves](#), [Throttle valves](#), [Throttle check valves](#), [Sandwich plate check valve](#), [One directional control valves](#), [Double throttle check valves](#), [Restrict flow valves](#), [Sandwich flow valves](#), [Pressure compensated valves](#), [Pressure compensated flow control valves](#), [Check valves](#), [Sandwich plate check valve](#), [Pilot operated check valve](#), [Check\(Non-return\)valves](#), [Hydraulic pilot operated check valve](#), [RVP series direct operated check valves](#), [Direct operated check valves](#), [Cartridge Valves](#), [Reverse check cartridge valves](#), [Hydraulic operated check cartridge valves](#), [Check cartridge valves](#), [Pilot operated check relief cartridge valves](#), [YF Direct operated relief cartridge valves](#), [Hydraulic accessories](#), [Six-circuit gauge isolator](#), [Pressure gauge isolator](#), [Hydraulic Pressure switch](#), [Pressure switch](#), [Piston type pressure switch](#), [Valve subplates](#), [Manifold bar](#),

Ningbo Hanshang Hydraulic Co., Ltd.

Add: 118 Qiancheng Road, Zhenhai, Ningbo, Zhejiang Province

Contact: Sean Zhou

Tel: 574-86361025

Fax: 574-86361266

E-mail: sales@china-hydraulicvalves.com

Website: <http://www.hydraulicvalvesf.com>