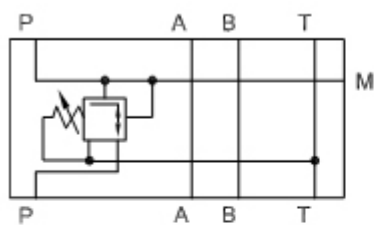


[China Direct operated pressure reducing valve, Manufacturer, Supplier, Factory, Exporter in china](#)

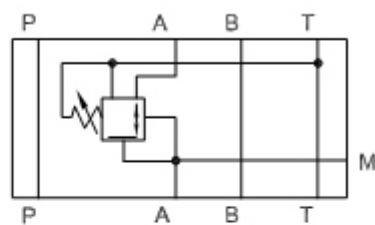


Symbols:

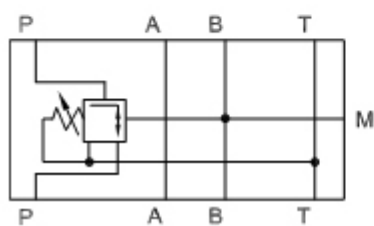
ZDR 6 DP...-4X/...YM...



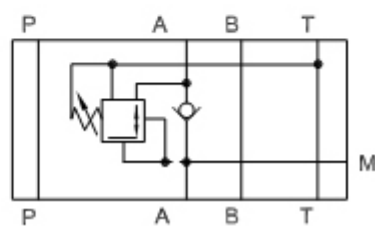
ZDR 6 DA...-4X/...YM...



ZDR 6 DB...-4X/...YM...



ZDR 6 DA...-4X/...YM...



Direct operated pressure reducing valve

Model FT-ZDR;D series are 3-way pressure reducing valve, direct operated. It reduces the pressure in a certain circuit lower than the main line..

Characteristic:

- 1. Sandwich plate amounting, standard dimensions for easy replacement..
- 2. Handwheel adjustment style available..
- 3. Four pressure setting arranges available. .

FT — Z DR 6 D A 1 — 40 — 25 Y

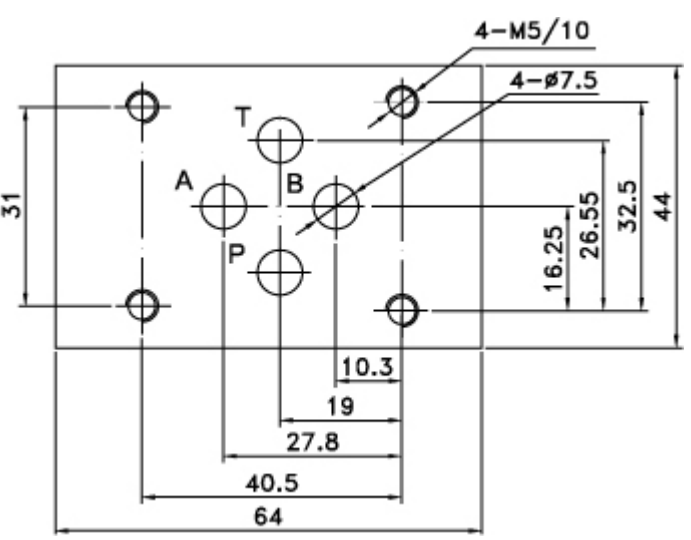
6 = Size 6 6, 10 = Size 6, 10	No code = Original black body color L = Body with blue color
D = Direct operated	No code = NBR seals for petroleum oils V = FPM seals for phosphate ester
A = A2 as Pressure reduction port B = P1 as Pressure reduction port (Port B for signal pilot control) P = P1 as Pressure reduction port	No code = With check valve (Only for ZDR 6 DA) M = Without check valve
1 = Handwheel 2 = Screw adjustment and protective cap	Y = Internally piloted, externally drained
Series no.	25 = 25bar 75 = 75bar 150 = 150bar 210 = 210bar



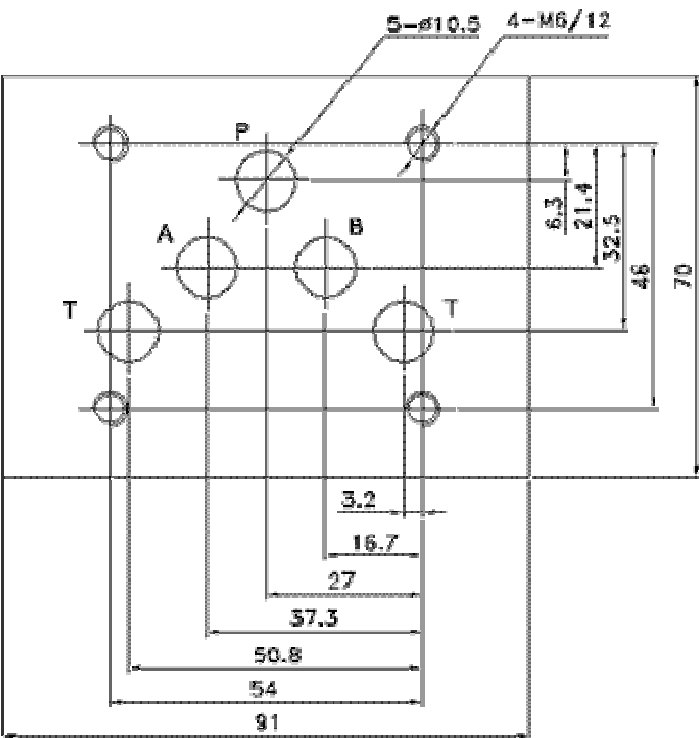
Technical data

General information		
Size	6	10
Flow Rate (L/min)	30	50
Inlet Operating Pressure (bar)	315	315
Outlet Operating Pressure (bar)	210	210 (DA and DP)
Back pressure (bar)	60	60
Fluid Temperature for NBR seal • C	-20~+80	

Model FT -- ZDR 6 D dimensions for mounting



Model FT -- ZDR 10 D dimensions for mounting



[Direct operated pressure reducing valve-01](#)

[Directional spool valves](#), [Direct operated spool valve](#), [Hand level spool valve](#), [Solenoid controlled directional valve](#), [Hydraulic operation valve](#), [Solenoid operated directional spool valve](#), [Electrical operated directional valve](#), [Hydraulic Solenoid valve](#), [Solenoid controlled directional valve](#), [Electro-hydraulic operation valves](#), [Externally pilot operated valve](#), [Hydraulic directional control valve](#), [Hydraulic operation directional control valve](#), [Manually directional valves](#), [Mechanical operational valve](#), [Manually operational valve](#), [Directional valves pilot operated](#), [Solenoid operated directional poppet valve](#), [Poppet valve with solenoid operation](#), [Directional poppet valves](#), [Pressure control valves](#), [Pressure relief valves](#), [Pressure direct operated relief valve](#), [Pilot operated pressure relief valve](#), [Pressure relief cartridge valve](#), [Pressure reducing valves](#), [Pilot operated pressure reducing valve](#), [Pressure unloading valves](#), [Pressure relief cartridge valve](#), [Pilot operated pressure unloading valve](#), [Pressure sequence valves](#), [Pilot operated pressure sequence valve](#), [Direct operated pressure reducing valve](#), [Sandwich plate pressure relief valve](#), [Flow control valves](#), [Throttle and throttle check valves](#), [Throttle valves](#), [Throttle check valves](#), [Sandwich plate check valve](#), [One directional control valves](#), [Double throttle check valves](#), [Restrict flow valves](#), [Sandwich flow valves](#), [Pressure compensated valves](#), [Pressure compensated flow control valves](#), [Check valves](#), [Sandwich plate check valve](#), [Pilot operated check valve](#), [Check \(Non-return\) valves](#), [Hydraulic pilot operated check valve](#), [RVP series direct operated check valves](#), [Direct operated check valves](#), [Cartridge Valves](#), [Reverse check cartridge valves](#), [Hydraulic operated check cartridge valves](#), [Check cartridge valves](#), [Pilot operated check relief cartridge valves](#), [YF Direct operated relief cartridge valves](#), [Hydraulic accessories](#), [Six-circuit gauge isolator](#), [Pressure gauge isolator](#), [Hydraulic Pressure switch](#), [Pressure switch](#), [Piston type pressure switch](#), [Valve subplates](#), [Manifold](#)

[bar](#).

Ningbo Hanshang Hydraulic Co.,Ltd.

Add: 118 Qiancheng Road, Zhenhai, Ningbo, Zhejiang Province

Contact: Sean Zhou

Tel: +86-574-86361025

Fax: +86-574-86361266

E-mail: sales@china-hydraulicvalves.com

WebSite: <http://www.hydraulicvalvesf.com>
