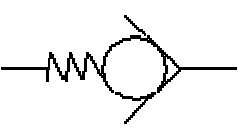


# China Direct operated check valves, Manufacturer, Supplier, Factory, Exporter in china



## Symbols:

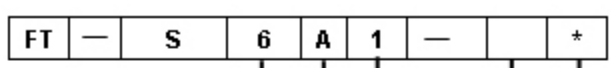


## Direct operated check valves

Model FT-S series are direct operated check valves, which for leak free closure in a check direction..

## Characteristic:

- 1. One leak free closure in one direction.
- 2. For in-line or manifold assembly...
- 3. Four cracking pressures available.



6 = Size 6  
(10, 20, 30 Subplate mounting)  
(6, 8, 10, 15, 20, 25, 30 Threaded connections)

A = Threaded connections  
P = Manifold mounting

Further details

No code = Inch (BSP) threaded  
2 = Metric threaded

0 = Without spring  
1 = Cracking pressure 0.5 (Bar)  
2 = Cracking pressure 1.5 (Bar)  
3 = Cracking pressure 3.0 (Bar)  
5 = Cracking pressure 5.0 (Bar)

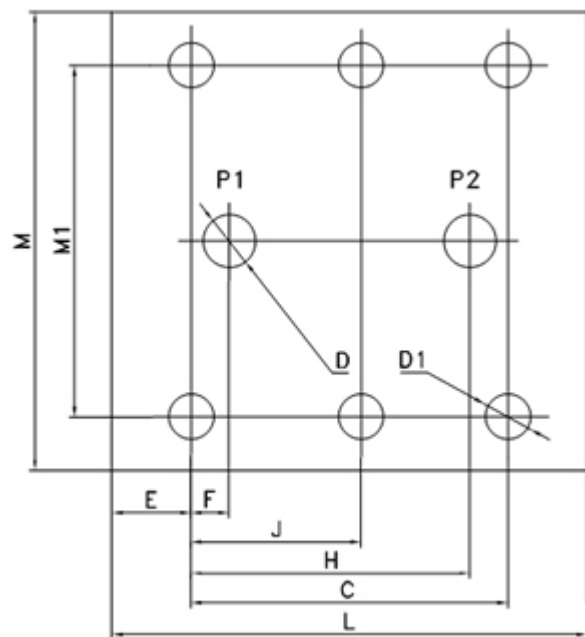


## Technical data

General information

<b>Size</b>	6	8	10	15	20	25	30	
<b>Threaded connections</b>	<b>Inch (BSP)</b>	G1/4	G3/8	G3/8	G3/4	G1	G1 1/4	G1 1/2
	<b>Metric</b>	M14x1.5	M18x1.5	M22x1.5	M27x2	M33x2	M42x2	M48x2
<b>Flow rate (L/min)</b>	15	30	50	120	200	300	400	
<b>Max. Operating Pressure (Bar)</b>	315							

**Model FT -- S...P dimensions for mounting**



Size	M	M1	L	E	F	J	H	C	D	D1
10	87	66.7	90	23.5	7.2	j <sup>a</sup>	35.8	42.9	11	4xM10/20
20	110	79.4	120	23.4	11.1	j <sup>a</sup>	49.2	60.3	22	4xM20/20
30	128	96.8	148	27.8	16.7	42.1	67.5	84.2	28	6xM10/20

[Directional spool valves](#), [Direct operated spool valve](#), [Hand level spool valve](#) , [Solenoid controlled directional valve](#) , [Hydraulic operation valve](#) , [Solenoid operated directional spool valve](#), [Electrical operated directional valve](#) , [Hydraulic Solenoid valve](#) , [Solenoid controlled directional valve](#) , [Electro-hydraulic operation valves](#), [Externally pilot operated valve](#) , [Hydraulic directional control valve](#), [Hydraulic operation directional control valve](#) , [Manually directional valves](#), [Mechanical operational valve](#) , [Manually operational valve](#), [Directional valves pilot operated](#) , [Solenoid operated directional poppet valve](#), [Poppet valve with solenoid operation](#) , [Directional poppet valves](#) , [Pressure control valves](#), [Pressure relief valves](#), [Pressure direct operated relief valve](#) , [Pilot operated pressure relief valve](#), [Pressure relief cartridge valve](#) , [Pressure reducing valves](#) , [Pilot operated pressure reducing valve](#), [Pressure unloading valves](#) , [Pressure relief cartridge valve](#), [Pilot operated pressure unloading valve](#), [Pressure sequence valves](#) , [Pilot operated pressure sequence valve](#), [Direct operated pressure reducing valve](#), [Sandwich plate pressure relief valve](#), [Flow control valves](#), [Throttle and throttle check valves](#), [Throttle valves](#) , [Throttle check valves](#), [Sandwich plate check valve](#) , [One directional control valves](#) , [Double throttle check valves](#), [Restrict flow valves](#), [Sandwich flow valves](#) , [Pressure compensated valves](#) , [Pressure compensated flow control valves](#) , [Check](#)

[Valves](#), [Sandwich plate check valve](#), [Pilot operated check valve](#), [Check\(Non-return\)valves](#), [Hydraulic pilot operated check valve](#), [RVP series direct operated check valves](#) , [Direct operated check valves](#), [Cartridge Valves](#), [Reverse check cartridge valves](#), [Hydraulic operated check cartridge valves](#), [Check cartridge valves](#), [Pilot operated check relief cartridge valves](#), [YF Direct operated relief cartridge valves](#), [Hydraulic accessories](#), [Six-circuit gauge isolator](#), [Pressure gauge isolator](#), [Hydraulic Pressure switch](#) , [Pressure switch](#), [Piston type pressure switch](#) , [Valve subplates](#), [Manifold bar](#),

---

Ningbo Hanshang Hydraulic Co.,Ltd.

Add: 118 Qiancheng Road, Zhenhai, Ningbo, Zhejiang Province

Contact: Sean Zhou

Tel: +86-574-86361025

Fax: +86-574-86361266

E-mail: [sales@china-hydraulicvalves.com](mailto:sales@china-hydraulicvalves.com)

WebSite: <http://www.hydraulicvalvesf.com>

---